



SUMMER SCHEDULE OF CLASSES 2025

Education Designed for Working Adults

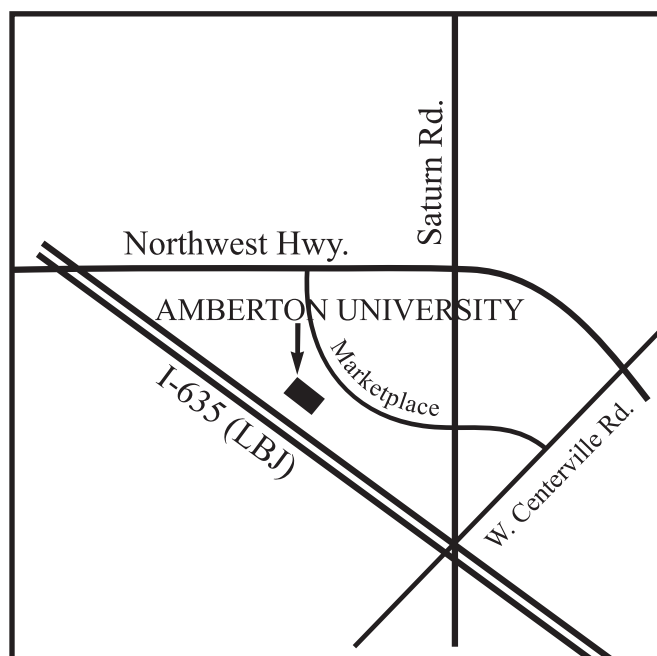
[Amberton.edu](https://www.Amberton.edu)

YOU ARE INVITED TO VISIT OUR FACILITIES...

Adults who are serious about their education can experience for themselves the professional atmosphere of Amberton University. For organizations interested in on-site or virtual courses, these are available on a customized basis.

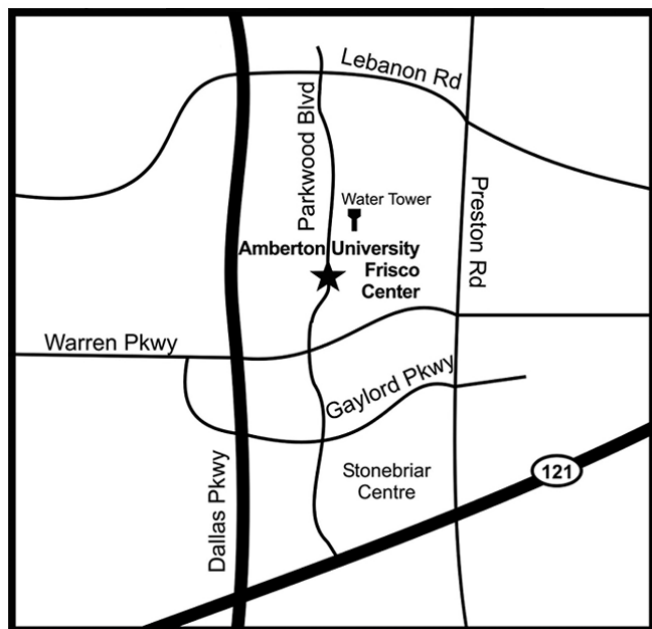
GARLAND CAMPUS
13601 LBJ FWY
Garland, TX 75041-4707
972/279-6511

Amberton University's Garland Campus is conveniently located at I-635 (LBJ Freeway) and Northwest Highway, only 15 minutes from US 75 and the Dallas North Tollway and 20 minutes from SH 190 and downtown Dallas.



FRISCO CENTER
3880 Parkwood Blvd.
Frisco, TX 75034-1928

The Amberton Frisco Center is located at 3880 Parkwood Blvd. From Dallas, go north on the Dallas North Tollway. Take the Gaylord/Warren exit and turn right on Warren Parkway and then turn left on Parkwood Blvd. The Amberton Frisco Center is north of Stonebriar Centre and next to the Frisco Water tower.



Amberton University is accredited by the Southern Association of Colleges and Schools Commission on Colleges (SACSCOC) to award bachelor's and master's degrees. Amberton University also may offer credentials such as certificates and diplomas at approved degree levels. Questions about the accreditation of Amberton University may be directed in writing to the Southern Association of Colleges and Schools Commission on Colleges at 1866 Southern Lane, Decatur, Georgia 30033-4097, telephone (404) 679-4500, or by using information available on SACSCOC's website (<http://www.sacscoc.org>).

Published by Amberton University, 2025

The University reserves the right to advance and revise requirements for admission, requirements for graduation and degrees, curricula of study, instruction of courses, arrangement of courses, charges for tuition and other fees, and other regulations affecting students, whether incoming or previously enrolled.

Unless otherwise noted, the terms "he" and "he/she" are used interchangeably to denote individuals of either sex.

TABLE OF CONTENTS

Academic Calendar	2
General Information	4
Telephone Numbers	5
Business Hours.....	6
Financial Information.....	7
Tuition	7
Specific Use Fees	7
Payment Terms.....	7
Refund Policy and Schedule	8
Adding or Dropping A Course	8
Payment Options	9
Office Extension Numbers and E-mail Addresses	11-12
Course Offerings:	
Undergraduate Lecture Courses	
Garland Campus	13
Frisco Center	13
Graduate Lecture Courses	
Garland Campus	14
Frisco Center	15
Distance Learning Courses	
Undergraduate	16-17
Graduate	18-19
Undergraduate and Graduate Programs	21
Degree Program Methods of Delivery	22
Undergraduate and Graduate Certificates	23
Admission Instructions	24
Registration Instructions	25
Application for Admission and Re-Admission	26
Undergraduate & Graduate Degree Program Codes.....	29
Additional Degree Program Codes for Former Students	30
Request for A Change of Schedule	31
Credit Card Payment Option.....	32

ACADEMIC CALENDAR

Amberton University offers four academic sessions per year, allowing greater flexibility in meeting the adult student's needs.

SUMMER SESSION 2025 CALENDAR

APRIL 2025

29.....Virtual Information Session (Streaming from 6:30pm - 7:30pm)

MAY 2025

01.....Registration for Summer Begins

31.....Virtual Information Session (Streaming from 12:00pm - 1:00pm)

JUNE 2025

12.....Last Day to Finalize Registration
(registration must be completed by 6:30 p.m.)

14.....First Day of Classes/ *Late Registration Begins

19.....Juneteenth Holiday - University will be closed

21.....Late Registration Ends

21.....Last Day for 100% Refund

21.....Last Day to File for Summer Graduation

JULY 2025

04.....Holiday - University will be closed

19.....Last Day to Withdraw with a Prorated Refund

AUGUST 2025

21.....Last Day of Session/Last Day to Withdraw from a Class
with a "W" (Drop must be received by this date.)

DATES FOR SATURDAY CLASSES

Saturday classes begin at 8:30 a.m.

Saturday 1 (SA1): June 14, 28; July 12, 26; August 09, 2025

Saturday 2 (SA2): June 21; July 05, 19; August 02, August 16, 2025

GRADUATION FOR SUMMER AND FALL 2025-FRIDAY, NOVEMBER 21, 2025

FALL 2025

Fall Registration Begins: August 1st

Fall Session Dates: Saturday, September 13, 2025 through November 20, 2025

NEW CERTIFICATES AND DEGREES

The undergraduate degrees offered by Amberton University were updated with the release of the 2024 - 2025 University Catalog. The General Education requirements for each degree were changed to include the MGT4720 Critical Thinking course and the required Math hours were reduced to 3 credit hours. If you would like to change to these updated degrees, please discuss this with your Academic Advisor.

GRADUATE TRAINING AND DEVELOPMENT CERTIFICATE

The Graduate Certificate in Training and Development is ideal for Amberton students who desire to enhance their personal and workplace influence. The curriculum focuses on the fundamental skills necessary to display professionalism, emotional intelligence, and other career-building skills including communications, team building, time management, conflict resolution, adaptability, critical thinking, work ethic, problem-solving, and leadership.

What are the Requirements?

The Training and Development Certificate, requires 4 courses (12 credit hours) including:

HRT6610	Digital and Distance Learning	3 hours
HRT6615	Adult Learning Theory & Foundations	3 hours
HRT6605	Training Needs Analysis & Evaluation	3 hours
HRT6565	Instructional Design	3 hours

Career Impact:

- Students will examine foundational models such as andragogy, transformational learning, experiential learning, and self-directed learning.
- Explore the cognitive, motivational, and social factors influencing adult learners in diverse educational and workplace settings. Through research and applied practice, students will develop strategies for designing, facilitating, and assessing effective adult learning experiences tailored to various learning contexts and populations.

UPDATED GRADUATE HUMAN RESOURCE MANAGEMENT CERTIFICATE

The Certificate in Human Resource Management offers students the knowledge and practical skills to enhance careers and job advancement in the Human Resources field. The focus is on elements of Human Resource Management within various organizational structures. In a robust economy, with unemployment rates as low as they've been in years, today's employers are in fierce competition to attract and retain top professional talent. Human Resources departments—and the experts that run them—are the X-factor that employers must rely upon when recruiting, hiring, and fostering the professional growth of their personnel.

What are the Requirements?

The Human Resource Management Certificate, requires 4 courses (12 credit hours) including:

MGT6177	Human Resources Management	3 hours
MGT6172	Human Resources Law	3 hours
HRT6575	Organizational Change	3 hours
HRT 6565	Instructional Design	3 hours

Career Impact:

- The skills and knowledge underlined in this program apply to the entirety of the HR profession, which spans organizations of all types, sizes, and industries.

GENERAL INFORMATION

CLASS TIMES AND COURSE INFORMATION

DISTANCE LEARNING

Amberton's distance learning courses are identical to classroom courses in terms of learning outcomes, competencies, and instructor expectations. A student choosing to take a distance learning course must have Internet access and be competent in using e-mail and a browser. Students interested in enrolling in Distance Learning Courses must review the course syllabus before enrolling. For more information, see the University's catalog or the Distance Learning section on the website www.Amberton.edu.

The Student Portal provides University students with access to many different educational tools and technologies to enhance their learning experience. These tools include access to an email system, research resources, course management system, and academic and financial information. Many of these tools allow students and faculty the opportunity to work together on completing various academic requirements. Additional information on the Student Portal is available on the University's website, www.Amberton.edu.

COURSE SYLLABI

The course syllabi are accessible for downloading and printing in the Course Guide provided on the University's website, www.Amberton.edu under 'Programs and Courses.' Search for the course (i.e., CSL6803) and then click on the course in the listing. The syllabi are included with each course listed in the Course Guide below the course description and competencies. Students can use any available computer to print out course syllabi, including the systems in the Computer Labs located in the Garland Campus Learning Resource Center and at the Frisco Center. A student should not register for a course before reading the syllabus. If you need assistance, please contact a Student Advisor at Advisor@Amberton.edu or StudentServices@Amberton.edu or at (972) 279-6511.

THE ELECTRONIC DEGREE PLAN

Students can have Amberton University transcribed work and all transfer work electronically evaluated against any degree in the University's Catalog. The Electronic Degree Plan (EDP) produces a printout of satisfied degree requirements as well as requirements that may be deficient relative to the degree selected. The EDP allows a student to compare his/her academic accomplishments against any or all degrees in the catalog. The EDP analyzes a student's records and provides a printed report. See a University advisor for further information on obtaining an EDP.

INCLEMENT WEATHER

The University will not broadcast class closings over radio or television. However, the University will announce any closing over its website. Usually, such an announcement will come no later than four hours in advance of the beginning of classes. For the most part, the University does not close unless conditions are extremely hazardous.



TELEPHONE NUMBERS



Amberton University has an automated telephone system that expedites calls and allows message recording and retrieval 24 hours a day. If you know the extension, dial the extension when prompted. If the extension is not known, dial 0 for the operator. For an emergency, call 0 for the operator. Listed below are the most often requested numbers:

MAIN NUMBER (972) 279-6511
EXTENSION

FRISCO CENTER 301

STUDENT SERVICES--Next Available Advisor 180

Advisors are available without an appointment.

Admission Records **180**

Registration Information **180**

Student Account Inquiry **180**

Transcript Information **180**

LIBRARY RESOURCE CENTER--For Library Assistance. 185

ADMINISTRATIVE FAX (972) 279-9773

This fax is for official administrative business only (withdrawals, registration, etc.).
DO NOT use this fax to report class absences or to submit homework.

BUSINESS HOURS

GARLAND CAMPUS

STUDENT SERVICES

OFFICE HOURS DURING CLASS SESSIONS

Advisors are available during office hours. No appointment is necessary.

Student Services Offices are open during the following hours:

Monday & Wednesday	10:00 a.m. to 10:00 p.m.
Tuesday & Thursday	10:00 a.m. to 6:30 p.m.
Friday	8:00 a.m. to 1:30 p.m.
Saturday	8:00 a.m. to 1:30 p.m.
Sunday	Closed

OFFICE HOURS BETWEEN CLASS SESSIONS

Monday - Thursday	10:00 a.m. to 6:30 p.m.
Friday	10:00 a.m. to 1:30 p.m.
Saturday	10:00 a.m. to 1:30 p.m.
Sunday	Closed

ADMINISTRATIVE OFFICES

University Administrative Offices are open during the following hours:

Monday - Thursday	8:00 a.m. to 5:00 p.m.
Friday	8:00 a.m. to 1:30 p.m.
Saturday	Closed
Sunday	Closed

LIBRARY RESOURCE CENTER

For Library hours between class sessions, call (972) 279-6511, Extension 137.

Hours during class sessions are as follows:

Monday & Wednesday	10:00 a.m. to 10:00 p.m.
Tuesday & Thursday	10:00 a.m. to 6:30 p.m.
Friday	8:00 a.m. to 1:30 p.m.
Saturday	8:00 a.m. to 1:30 p.m.
Sunday	Closed

FRISCO CENTER

Monday & Wednesday	10:00 a.m. to 6:30 p.m.
Tuesday & Thursday	10:00 a.m. to 10:00 p.m.
Friday	8:00 a.m. to 1:30 p.m.
Saturday	8:00 a.m. to 1:30 p.m.
Sunday	Closed

FINANCIAL INFORMATION

All charges in this schedule are subject to change without notice, if conditions make it necessary.

TUITION

PER COURSE (\$325 per credit hour)..... **\$975.00**

(This rate applies to undergraduates, graduates, in-state and out-of-state students, as well as lecture and distance-learning courses.)

(Tuition is refundable based upon the Refund Policy and Schedule.)

SPECIFIC USE FEES

(Specific use fees are not refundable.)

Course Drop Fee (per each drop).....	\$10.00
Credit Card Rejection Fee (per each occurrence).....	\$25.00
Deferred Payment Fee (charged each session)	\$5.00
Duplicate Diploma Fee	\$15.00
Financial Records Search Fee	\$5.00
Graduation Evaluation Fee (accompanies graduation application and good for one year from date of application)	\$125.00
Grade Change Fee	\$10.00
International New Student Processing Fee (accompanies admission application).....	\$100.00
International Student Reporting Fee (charged each session).....	\$25.00
Late Registration Fee (per each occurrence)	\$25.00
Library Fines (per each day overdue).....	\$00.35
Portfolio Application (per course)	\$50.00
Portfolio Fee (per course when submitted).....	\$200.00
Pre-Practicum and Practicum Fee.....	See Course Listing
Program Fee (mandatory-charged each session)	\$15.00
Returned Check Fee (per each occurrence)	\$25.00
School Counseling Assessment Fee (state mandated-one time fee)	\$35.00
Technology Fee (mandatory-charged each session)	\$45.00
Transcript Fee (per each transcript ordered).....	\$5.00

PAYMENT TERMS

Amberton University's tuition is among the lowest in the region. The tuition rate is the same regardless of academic level or method of delivery (lecture or distance learning). Amberton does not charge a different tuition rate for out-of-state students.

Payment plans are available to students who demonstrate financial integrity to the satisfaction of the University. Students have the option of paying for their courses at enrollment, making payments throughout the session, or making one payment by the last day of the session. The University is also approved for Title IV Financial Aid and select private educational loans. Employer tuition assistance plans are accepted, with proper documentation. Student accounts are subject to a monthly finance charge of $\frac{3}{4}$ of 1%. Please visit www.Amberton.edu for more information.

Payments can be made in the form of cash, credit cards (VISA, MasterCard, Discover Card, and American Express only), money orders, personal checks, company checks or cashier's checks. All payments submitted to the University must be received in U.S. funds.

REFUND POLICY AND SCHEDULE

A student who officially drops a class during the first week of the session will be entitled to a full refund of tuition. Please read the current catalog for a complete discussion of the Refund Policy. A student who drops a class during this session will be refunded on the following schedule:

DATES	REFUND%
06/14/25 through 06/21/25	100%
06/22/25 through 06/28/25	80%
06/29/25 through 07/05/25	60%
07/06/25 through 07/12/25	40%
07/13/25 through 07/19/25	20%

There is no refund after **07/19/25**. The refund schedule is based on the beginning date of the session. Late registration and/or class absences are not considered exceptions to the refund policy. In the event a refund results in a credit balance on the student's account, the credit balance will remain on file until the student notifies the Business Office—in writing—of its disposition. Credit balances remaining on an account for a period of over 60 days will incur a maintenance fee. Refunds originating from a credit card payment may be credited only to the credit card account.

ADDING OR DROPPING A COURSE (CLASS CHANGES OR WITHDRAWALS)

During the registration period, available courses can be added to your schedule or dropped from your schedule through the online registration portal (link on website and Student Portal). **To be official, when a schedule change is requested in the online registration portal, the 'Submit' button must be clicked. If the change is not submitted, your request(s) will not be processed and any pending class changes will be removed from the system after 48 hours and not processed by the University.**

Complete withdrawals from a session cannot be submitted online. All complete withdrawals must submit the 'Request for Change of Schedule' form available in the Schedule of Classes and on the University's website. A written notice including the student's name and signature, ID number, and course(s) to be changed can be submitted in place

of the Change of Schedule Form. The notice may be submitted in a Student Services Office, mailed to the University, faxed (**972-279-9773**) or emailed (**busoffice@Amberton.edu**).

Once the registration period has concluded, all course withdrawals must be submitted in writing, no classes can be withdrawn from through the online portal. **NO change is accepted verbally.** The official date of the change is the date the University formally receives the written notice, NOT the postmark date or the date stated in the notice. The University's record concerning a change is indisputable unless the student can provide reliable evidence of an earlier receipt date.

Confirmation of the class change can be viewed in the online registration portal under the 'My Schedule' link once the University has processed the request or in the Student Services Online system inside the Student Portal. In the event the student does not see the course change within 3 working days, the student is to contact the University.



PAYMENT OPTIONS

OUR PHILOSOPHY

Amberton University's philosophy is to provide an affordable, quality education at a reasonable cost. In keeping with this philosophy, all tuition and fees are due and payable at the time of enrollment. However, for students with acceptable credit, the University offers the following convenient payment options.

PAYMENT METHODS

Payments can be submitted to the University in the form of cash, checks, money orders, cashier's checks, and credit cards (**VISA, MasterCard, Discover Card, and American Express only**). Payments can be mailed, submitted at the Student Services Offices in Garland and Frisco, and faxed. **Credit/debit card payments can also be made online through the Student Portal and the Online Registration Portal.**

PAYMENT DEFERRAL

Students who can prove financial integrity to the satisfaction of the University may make application to defer their educational costs when enrolling. To apply for the payment deferral program, select the correct payment option when enrolling online.

EMPLOYER TUITION ASSISTANCE

Many employers provide tuition assistance for their employees. Explore your options by visiting your employer's Human Resources Personnel Office about tuition reimbursement benefits.

VETERANS BENEFITS

Amberton University is approved to administer the Veteran's Educational Benefits Program. Contact a Student Advisor or refer to the Amberton University Catalog 2024-2025 for more information. Information is also available on the University's website, www.Amberton.edu.

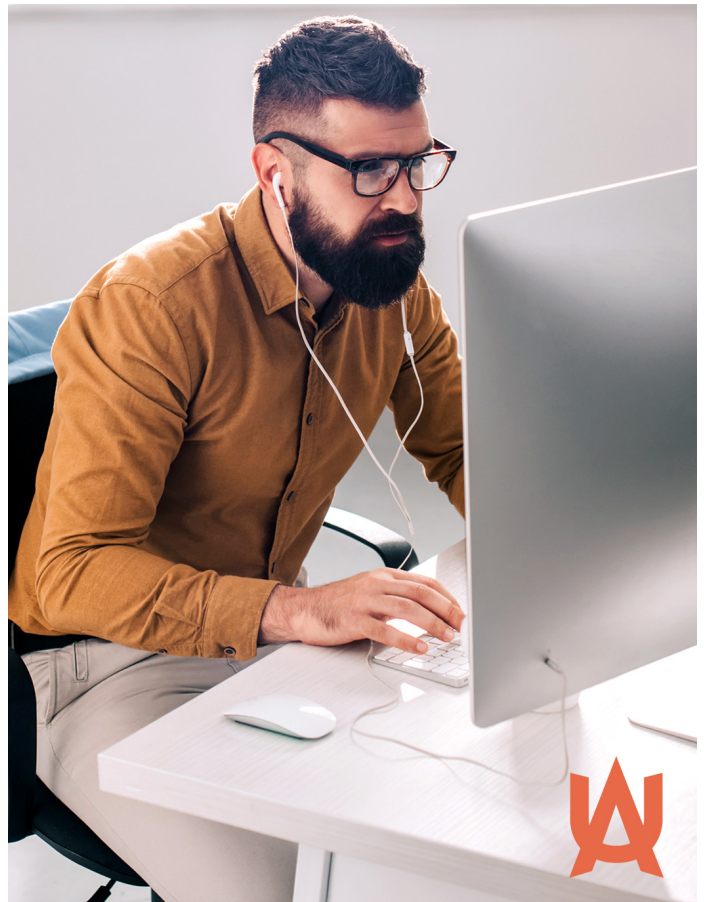
TITLE IV FINANCIAL AID

The University is certified to participate in Title IV financial aid programs for undergraduate and graduate degree students and programs. For more information on financial aid programs and eligibility, please visit <https://Studentaid.gov>, speak to a Student Advisor at **(972) 279-6511 option # 4**, or email finaid@Amberton.edu.

SALLIE MAE® SMART OPTION STUDENT LOAN®

The Sallie Mae® Smart Option Student Loan® is a private, credit-based, school-certified student loan for student borrowers enrolled at least half time. For information about the application process visit **Sallie Mae®** (<http://www.salliemae.com>).

SLM Corporation and its subsidiaries are not sponsored by or agencies of the United States of America. Sallie Mae® is a registered service mark of Sallie Mae, Inc.



MARRIAGE AND FAMILY THERAPY & CLINICAL MENTAL HEALTH COUNSELING (FORMERLY PROFESSIONAL COUNSELING) PROGRAM CHANGES

We are excited to announce some important changes to the **Marriage & Family Therapy** and **Clinical Mental Health Counseling Programs (formerly Professional Counseling)** that were implemented during the Fall 2023 session. These changes have been carefully designed to empower you to succeed in your program and chosen career. The key program changes are listed below.

Marriage and Family Therapy Program

NEW AMFTRB Practice Exam Pass Requirement: The American Family Therapy Regulatory Board (AMFTRB) Practice Exam is designed to give candidates an opportunity to experience a simulated test and give an indication of their preparedness for taking the actual MFT Exam. This exam will also give candidates an opportunity to become familiar with the test questions on the National MFT Exam. All students must take and pass the AMFTRB practice test and earn a score of 66% or above prior to enrolling in CSL6839 Pre-Practicum. (Sign-up by June 26, 2025 to test in the Summer if you plan to register for Pre-Practicum during the Fall 2025 session.) It is recommended that students take the test after successfully completing 30 hours of required curriculum. **Note: This is a practice exam, not the actual state exam required for licensure.**

Portfolio Elimination: Preparation of the counseling portfolio will no longer be required.

Detailed AMFTRB exam information is available on our website in the new Marriage & Family Therapy Handbook and on the AMFTRB Information Page. The sign-up deadline dates and form for the AMFTRB Exam are also located on the AMFTRB Information Page on our website.

Clinical Mental Health Counseling Program (Formerly Professional Counseling)

NEW CPCE Exam Pass Requirement: The Counselor Preparation Comprehensive Examination (CPCE) is designed to measure a student's level of mastery of the requisite knowledge and skills identified by the Council for Accreditation of Counseling and other Educational Professions for the preparation of professional counselors. All students must take and pass the CPCE practice test and earn a score of 66% or above prior to enrolling in CSL6839 Pre-Practicum. (Sign-up by June 26, 2025 to test in the Summer if you plan to register for Pre-Practicum during the Fall 2025 session.) It is recommended that students take the test after successfully completing 30 hours of required curriculum. **Note: This is a practice exam, not the actual state exam required for licensure.**

Portfolio Elimination: Preparation of the counseling portfolio will no longer be required.

Detailed CPCE exam information is available on our website in the new Clinical Mental Health Counseling Handbook and on the CPCE Information Page. The sign-up deadline dates and form for the CPCE Exam are also located on the CPCE Information Page on our website.

We believe these program changes will positively prepare you to excel in your field. If you have any questions or need further clarification, please reach out to the Campus Coordinator, Dr. Ken Johnson at: KJohnson@amberton.edu.

OFFICE EXTENSION NUMBERS and E-MAIL ADDRESSES

ADMINISTRATION

President	Dr. Carol A. Palmer.....	122.....	President@Amberton.edu
Executive Vice President for Operations	Dr. Brent Bradshaw.....	141.....	ExecVP@Amberton.edu
Vice President for Strategic Services	Dr. Jo Lynn Loyd	126.....	VPSS@Amberton.edu
Academic Dean	Dr. Paul Burton	165.....	AcadDean@Amberton.edu
Dean for Enrollment & Student Services	Oscar Lopez	170.....	OLopez@Amberton.edu
Academic Advising		180.....	Advisor@Amberton.edu
University Publications		164.....	Info@Amberton.edu
Library Assistance		137.....	Library@Amberton.edu
Frisco Center		301.....	AUFrisco@Amberton.edu
Financial Aid		173.....	FinAid@Amberton.edu

FACULTY

Allison, Dr. Kyle	223	KAllison@Amberton.edu
Armstrong, Dr. Levi.....	149	LArmstrong@Amberton.edu
Bedard, Dr. Christopher	156	CBedard@Amberton.edu
Bowersox, Dr. Nicholas	257	NBowersox@Amberton.edu
Boyette, Mr. Dartanian.....	240	DBoyette@Amberton.edu
Bradshaw, Dr. Brent.....	141	BBradshaw@Amberton.edu
Breen, Ms. Cindy	168	CBreen@Amberton.edu
Burton, Dr. Paul	232	PBurton@Amberton.edu
Campbell, Dr. David	231	DCampbell@Amberton.edu
Cole, Dr. La'Boris.....	220	LCole@Amberton.edu
Darnell, Dr. Ronald.....	152	RDarnell@Amberton.edu
Flatt, Dr. Kimberlee	209	KFlatt@Amberton.edu
Flores, Dr. Jimmie.....	239	JFlores@Amberton.edu
Fowler, Dr. Matthew	208	MFowler@Amberton.edu
Gooden, Dr. Dale	224	DGooden@Amberton.edu
Hebbard, Dr. Don.....	157	DHebbard@Amberton.edu
Hedgpeth, Dr. David	221	DHedgpeth@Amberton.edu
Herring, Dr. Aimee.....	216	AHerring@Amberton.edu

Hill, Dr. Deborah.....	211	DHill@Amberton.edu
Hurbough, Dr. Debra.....	255	DHurbough@Amberton.edu
Johnson, Dr. Ken.....	160	KJohnson@Amberton.edu
Johnson, Dr. Pamela.....	147	PJohnson@Amberton.edu
Johnson, Dr. Rose	205	RJohnson@Amberton.edu
Johnston, Dr. Jackie	261	JJohnston@Amberton.edu
Joseph, Ms. Veronika	244	VJoseph@Amberton.edu
Loyd, Dr. Jo Lynn	126	JLoyd@Amberton.edu
Millican, Dr. Vicki	151	VMillican@Amberton.edu
Moffitt, Dr. Carla	139	CMoffitt@Amberton.edu
Nyamandi, Dr. Varaidzo.....	264	VNyamandi@Amberton.edu
Page, Dr. Stacy.....	242	SPage@Amberton.edu
Palmer, Dr. Angela.....	274	APalmer@Amberton.edu
Pennington, Ms. Ivy.....	218	IPennington@Amberton.edu
Peters, Dr. Rachael.....	227	RPeters@Amberton.edu
Price, Dr. Sharon.....	208	SPrice@Amberton.edu
Redd, Dr. Sidney.....	238	SRedd@Amberton.edu
Richey, Dr. Douglas	245	DRichey@Amberton.edu
Richey, Dr. Jim.....	210	JRichey@Amberton.edu
Ross, Dr. Iman.....	237	IRoss@Amberton.edu
Rupe, Dr. Robert	258	RRupe@Amberton.edu
Salazar, Dr. Rene.....	229	RSalazar@Amberton.edu
Sanchez, Dr. DiAnn	163	DSanchez@Amberton.edu
Schultz, Dr. Jonathan	153	JSchultz@Amberton.edu
Scott, Dr. Cathy.....	267	CScott@Amberton.edu
Sinclair, Dr. John.....	262	JSinclair@Amberton.edu
Springer, Dr. Verlene.....	230	VSpringer@Amberton.edu
Stephenson, Dr. Blair	234	BStephenson@Amberton.edu
Thompson, Dr. Ben.....	252	BThompson@Amberton.edu
Tidwell, Dr. Steven	169	STidwell@Amberton.edu
Tolbert, Dr. Renee	273	RTolbert@Amberton.edu
Trulson, Dr. Michael	249	MTrulson@Amberton.edu
Van Hamme, Dr. Jerry.....	207	JVanHamme@Amberton.edu
Woods, Dr. Michael	253	MWoods@Amberton.edu
Wright, Dr. LeAndrian.....	250	LWright@Amberton.edu

UNDERGRADUATE LECTURE COURSES GARLAND CAMPUS

Monday - Thursday classes begin at 6:30 p.m. Saturday classes begin at 8:30 a.m.

COURSE	DESCRIPTION	INSTRUCTOR	DAY	ROOM
--------	-------------	------------	-----	------

HUMAN BEHAVIOR AND DEVELOPMENT

HBD4722.01	DEVELOP HUMAN POTENTIAL	Page	MON	18
------------	-------------------------	------	-----	----

MANAGEMENT

MGT4650.01	CONTEMPORARY MGMT ISSUES	Johnson, R	SA2	17
------------	--------------------------	------------	-----	----

FRISCO CENTER

COMMUNICATION

COM4407.21	NONVERBAL COMMUNICATION	Nyamandi	THR	F2
------------	-------------------------	----------	-----	----

NOTE: Business Administration course requirements may be fulfilled by courses from Accounting, Business, Economics, Finance, Management, Management Information Systems, and Marketing.

GRADUATE LECTURE COURSES GARLAND CAMPUS

Monday - Thursday classes begin at 6:30 p.m. Saturday classes begin at 8:30 a.m.

COURSE	DESCRIPTION	INSTRUCTOR	DAY	ROOM
--------	-------------	------------	-----	------

COUNSELING

CSL6760.01	ADDICTION COUNSELING	Ross	MON	19
CSL6796.01	ADULT/GERIAT PSYCHOPATH	Armstrong	WED	19
CSL6805.01	GROUP COUNSELING/THERAPY	Ross	WED	17
CSL6839.01	PRE-PRACTICUM	Johnson, K	WED	18

HUMAN BEHAVIOR AND DEVELOPMENT

HBD5722.01	DEVELOP HUMAN POTENTIAL	Page	MON	18
------------	-------------------------	------	-----	----

MANAGEMENT

MGT5650.01	CONTEMPORARY MGMT ISSUES	Johnson, R	SA2	17
MGT6203.01	STRATEGIC MANAGEMENT	Tidwell	MON	17

REQUIRED GRADUATE STUDIES

RGS6035.01	RESEARCH METHODS	Richey, D	SA1	19
------------	------------------	-----------	-----	----

NOTE: Business Administration course requirements may be fulfilled by courses from Accounting, Business, Economics, Finance, Management, Management Information Systems, and Marketing.

GRADUATE LECTURE COURSES FRISCO CENTER

Monday - Thursday classes begin at 6:30 p.m. Saturday classes begin at 8:30 a.m.

COURSE	DESCRIPTION	INSTRUCTOR	DAY	ROOM
COMMUNICATION				
COM5407.21	NONVERBAL COMMUNICATION	Nyamandi	THR	F2
COUNSELING				
CSL6801.21	LIFE SPAN DEVELOPMENT	Bedard	THR	F1
CSL6825.21	MARRIAGE/FAMILY THERAPY	Hebbard	SA1	F2
CSL6833.21	CNSLG CHILDREN & ADOLESC	Moffitt	SA1	F1
CSL6835.21	PLAY THERAPY	Millican	SA2	F1
MANAGEMENT				
MGT6515.21	AGILE FRAMEWORKS	Darnell	TUE	F1
MARKETING				
MKT6210.21	MARKETING MANAGEMENT	Woods	SA2	F2

NOTE: Business Administration course requirements may be fulfilled by courses from Accounting, Business, Economics, Finance, Management, Management Information Systems, and Marketing.

UNDERGRADUATE DISTANCE LEARNING COURSES

COURSE	DESCRIPTION	INSTRUCTOR	
ACCOUNTING			
ACC2112.E1	MANAGERIAL ACCOUNTING	Tolbert	DL
ACC3115.E1	INTERMEDIATE ACCT II	Price	DL
ACC3120.E1	SURVEY FEDERAL TAX	Joseph	DL
BUSINESS			
BUS3101.E1	BUSINESS LAW	Campbell	DL
BUS4113.E1	ACCT & FIN FOR MANAGERS	Price	DL
BUS4425.E1	ENTREPRENEURSHIP	Tidwell	DL
BUS4460.E1	CUSTOM SERVICE BEST PRAC	Tidwell	DL
COMMUNICATION			
COM3461.E1	TECHNICAL WRITING	Richey, J	DL
COM3469.E1	MANAGERIAL COMMUNICATION	Redd	DL
COM4407.E1	NONVERBAL COMMUNICATION	Nyamandi	DL
COM4445.E1	PUBLIC RELATIONS	Redd	DL
ECONOMICS			
ECO2131.E1	PRIN OF MACROECONOMICS	Schultz	DL
ENGLISH			
ENG1001.E1	COMPOSITION & RHETORIC	Richey, J	DL
FINANCE			
FIN3137.E1	BUSINESS FINANCE	Thompson	DL
HUMAN BEHAVIOR AND DEVELOPMENT			
HBD3173.E1	ORGANIZATIONAL BEHAVIOR	Trulson	DL
HBD4735.E1	HUMAN RESOURCE INVENTORY	Page	DL
HBD4890.E1	MOTIVATION FOR SUCCESS	Hedgpeth	DL
MATHEMATICS			
MAT1024.E1	QUANTITATIVE METHODS	Johnston	DL
MANAGEMENT			
MGT4174.E1	PERSONNEL MANAGEMENT	Pennington	DL
MGT4199.E1	BUSINESS ADMIN & POLICY	Wright	DL

UNDERGRADUATE DISTANCE LEARNING COURSES

COURSE	DESCRIPTION	INSTRUCTOR	
MANAGEMENT			
MGT4350.E1	ESSENTIAL SOFT SKILLS	Hill	DL
MGT4495.E1	PROJ MGMT FOUNDATIONS	Breen	DL
MGT4502.E1	PROJ BUDGET & PROCUREMENT	Boyette	DL
MGT4504.E1	PROJ STKHLDR ENGAGE/COMM	Stephenson	DL
MGT4690.E1	MANAGING GENERATIONS	Sanchez	DL
MGT4710.E1	APPLIED AI FOR BUSINESS	Sinclair	DL
MGT4720.E1	CRITICAL THINKING	Schultz	DL
MGT4765.E1	AI ESSENTIALS	Sinclair	DL
MARKETING			
MKT4270.E1	ECOMMERCE & WEB ANALYSIS	Allison	DL
MKT4280.E1	DIGIT ADVERT & NEW MEDIA	Allison	DL
RELIGION			
REL2032.E1	LIFE/TEACHINGS OF JESUS	Van Hamme	DL
SCIENCE			
SCI1027.E1	ECOLOGY:MAN/ENVIRONMENT	Salazar	DL

NOTE: Business Administration course requirements may be fulfilled by courses from Accounting, Business, Economics, Finance, Management, Management Information Systems, and Marketing.

GRADUATE DISTANCE LEARNING COURSES

COURSE	DESCRIPTION	INSTRUCTOR	
ACCOUNTING			
ACC6130.E1	FINANCIAL STMT ANALYSIS	Price	DL
ACC6135.E1	DATA ANALYTICS ACCT	Price	DL
ACC6150.E1	FORENSIC ACCOUNTING	Fowler	DL
BUSINESS			
BUS5425.E1	ENTREPRENEURSHIP	Tidwell	DL
BUS5460.E1	CUSTOM SERVICE BEST PRAC	Tidwell	DL
COMMUNICATION			
COM5469.E1	MANAGERIAL COMMUNICATION	Redd	DL
COM5407.E1	NONVERBAL COMMUNICATION	Nyamandi	DL
COM5445.E1	PUBLIC RELATIONS	Redd	DL
COM6420.E1	CULTURAL COMMUNICATION	Nyamandi	DL
COUNSELING			
CSL6720.E1	CHRISTIAN COUNSELING	Hebbard	DL
CSL6740.E1	COUNSELING ETHICS	Cole	DL
CSL6745.E1	SCHOOL COUNSELING ETHICS	Millican	DL
CSL6765.E1	CRISIS COUNSELING	Johnson, P	DL
CSL6770.E1	ADV COUNSELING ETHICS	Moffitt	DL
CSL6779.E1	COUNSELING IN SCHOOLS	Hurbough	DL
CSL6780.E1	PRO CNSLG ORIENTATION	Springer	DL
CSL6780.E2	PRO CNSLG ORIENTATION	Flatt	DL
CSL6782.E1	THEORIES/METHODS CNSLG	Millican	DL
CSL6792.E1	COUPLES THERAPY	Hebbard	DL
CSL6798.E1	CHILD/ADOL PSYCHOPATH	Armstrong	DL
CSL6800.E1	COUNSELING ASSESSMENT	Armstrong	DL
CSL6803.E1	CAREER CNSLG/GUIDANCE	Johnson, P	DL
CSL6830.E1	CNSLG SKILLS & TECH	Johnson, K	DL
CSL6832.E1	MULTICULTURAL COUNSELING	Johnson, P	DL
CSL6837.E1	STRAT BEHAVIOR INTERVENT	Moffitt	DL
CSL6840.E1	PRACTICUM I *	Johnson, K	DL
CSL6845.E1	PRACTICUM II *	Bedard	DL
CSL6850.E1	PRACTICUM III *	Johnson, K	DL
CSL6860.E1	PRAC EXP CHRISTIAN CNSLG	Bedard	DL
CSL6865.E1	EXTENDED PRACTICUM	Bedard	DL
ECONOMICS			
ECO6140.E1	MANAGERIAL ECONOMICS	Fowler	DL
FINANCE			
FIN6186.E1	MANAGERIAL FINANCE	Thompson	DL

Practicum Fee \$100 *

GRADUATE DISTANCE LEARNING COURSES

COURSE	DESCRIPTION	INSTRUCTOR	
HUMAN BEHAVIOR AND DEVELOPMENT			
HBD5173.E1	ORGANIZATIONAL BEHAVIOR	Trulson	DL
HBD5735.E1	HUMAN RESOURCE INVENTORY	Page	DL
HBD5890.E1	MOTIVATION FOR SUCCESS	Hedgpeth	DL
HBD6768.E1	AGING AND END OF LIFE	Herring	DL
HBD6771.E1	CONFLICT MGMT/RESOLUTION	Palmer, A	DL
HBD6776.E1	LDRSHP THEORIES/PRACTICE	Bradshaw	DL
HUMAN RESOURCES AND TRAINING			
HRT6560.E1	ORGANIZATIONAL CULTURE	Rupe	DL
HRT6570.E1	LEADERSHIP AND TEAM DEV	Flores	DL
HRT6615.E1	ADULT THEORY/FOUNDATIONS	Rupe	DL
MANAGEMENT			
MGT5350.E1	ESSENTIAL SOFT SKILLS	Hill	DL
MGT5690.E1	MANAGING GENERATIONS	Sanchez	DL
MGT5710.E1	APPLIED AI FOR BUSINESS	Sinclair	DL
MGT5720.E1	CRITICAL THINKING	Schultz	DL
MGT5765.E1	AI ESSENTIALS	Sinclair	DL
MGT6151.E1	PROJ VAL/DLVRY/STRAT/PLN	Darnell	DL
MGT6153.E1	PROJ UNCERT/MSR/DLVR MDL	Burton	DL
MGT6172.E1	HR MANAGEMENT LAW	Peters	DL
MGT6174.E1	ORGANIZATIONAL STAFFING	Sanchez	DL
MGT6175.E1	MGMT:RSPNSBLTY/PRACTICE	Stephenson	DL
MGT6177.E1	HUMAN RESOURCE MGMT	Hill	DL
MGT6203.E1	STRATEGIC MANAGEMENT	Tidwell	DL
MGT6220.E1	MANAGE GLOBAL WORKFORCE	Sanchez	DL
MGT6460.E1	APPLIED BUS ANALYTICS	Scott	DL
MGT6480.E1	PREDICTIVE HR ANALYTICS	Bowersox	DL
MGT6485.E1	HR MGMT APPLICATIONS	Sanchez	DL
MGT6515.E1	AGILE FRAMEWORKS	Darnell	DL
MGT6525.E1	AGILE VALUE DELIVERY	Darnell	DL
MGT6795.E1	STORYTELLING/DATA VISUAL	Bowersox	DL
MARKETING			
MKT5270.E1	ECOMMERCE & WEB ANALYSIS	Allison	DL
MKT5280.E1	DIGIT ADVERT & NEW MEDIA	Allison	DL
REQUIRED GRADUATE STUDIES			
RGS6035.E1	RESEARCH METHODS	Gooden	DL
RGS6035.E2	RESEARCH METHODS	Sinclair	DL
RGS6035.E3	RESEARCH METHODS	Schultz	DL
RGS6036.E1	ETHICS:DECISION MAKING	Loyd	DL
RGS6036.E2	ETHICS:DECISION MAKING	Van Hamme	DL

NOTE: Business Administration course requirements may be fulfilled by courses from Accounting, Business, Economics, Finance, Management, Management Information Systems, and Marketing.

Join Us For A Streaming Information Session!

April 29, 2025 from 6:30pm - 7:30pm

May 31, 2025 from 12:00pm - 1:00pm



Learn more about Amberton University by attending one of our Online Information Sessions. Prospective students attending will receive:

- An Overview of Amberton University
- Information on University Degrees & Specialization Program Requirements
- Instructions on the Admission & Registration Process
- Information on Course Delivery Methods and Scheduling
 - Tips for the First Day of Class
 - Plus, much more!

**Contact us at info@amberton.edu
to RSVP for our Online Information Session.**



UNDERGRADUATE PROGRAMS

BACHELOR OF ARTS

Professional Development

BACHELOR OF BUSINESS ADMINISTRATION

Accounting *

Public Accounting Track

Management Accounting Track

BBA/MBA Dual Degree Program Accounting *

Entrepreneurship

General Business *

Management *

Project Management *

BACHELOR OF SCIENCE

Applied Studies

Human Relations and Business

GRADUATE PROGRAMS

MASTER OF ARTS

Marriage and Family Therapy **

Clinical Mental Health Counseling ** *(formerly Professional Counseling)*

Professional Development

School Counseling **

MASTER OF BUSINESS ADMINISTRATION

Accounting *

Entrepreneurship

General Business *

Management *

Project Management *

Strategic Leadership *

MASTER OF SCIENCE

Agile Project Management *

Data Analytics

Family Studies

Family Studies with a Specialization
in Christian Counseling

Human Relations and Business

Human Resource Management *

Human Resource Training and Development

Managerial Science *

- * These programs are accredited by the Accreditation Council for Business Schools and Programs (ACBSP).
- ** Students must reside in Texas and be able to commute to on-campus courses. These degrees meet the licensure requirements for the state of Texas. No determination has been made for degree requirements of other states.

DEGREE PROGRAM METHODS OF DELIVERY

	<u>Classroom</u> **	<u>DL</u> *
BA Professional Development	✓	✓
BBA Accounting	✓	✓
BBA/MBA Dual Degree Program Accounting	✓	✓
BBA Entrepreneurship	✓	✓
BBA General Business	✓	✓
BBA Management	✓	✓
BBA Project Management	✓	✓
BS Applied Studies	✓	✓
BS Human Relations & Business	✓	✓
MA Marriage and Family Therapy	✓	
MA Clinical Mental Health Counseling	✓	
MA Professional Development	✓	✓
MA School Counseling	✓	
MBA Accounting	✓	✓
MBA Entrepreneurship	✓	✓
MBA General Business	✓	✓
MBA Management	✓	✓
MBA Project Management	✓	✓
MBA Strategic Leadership	✓	✓
MS Agile Project Management	✓	✓
MS Data Analytics	✓	✓
MS Family Studies	✓	✓
MS Family Studies with a Specialization in Christian Counseling	✓	✓
MS Human Relations & Business	✓	✓
MS Human Resource Management	✓	✓
MS Human Resource Training & Development	✓	✓
MS Managerial Science	✓	✓

** Classroom degree programs can be completed with a combination of classroom and online courses.

* Distance Learning degree programs are available via the Internet with no on-campus attendance required.

AMBERTON UNIVERSITY CERTIFICATE PROGRAMS

Amberton University offers a number of certificate programs for those individuals seeking to enhance their professional skills and marketability in the workforce. Students must meet University general admission requirements for enrollment.

- **Graduate and Undergraduate Level Programs Available**
- **Three College Credit Hours Awarded Per Certificate Course**
- **Courses May Be Applied to a Degree Program**

UNDERGRADUATE CERTIFICATES

Business Management Essentials

Customer Service

Digital Marketing

Entrepreneurship

Executive Communication Skills

Project Management

Soft Skills

GRADUATE CERTIFICATES

Adult Training and Development

Agile Project Management

Change Management

Christian Counseling

Conflict Management and Resolution

Customer Service

Data Analytics

Digital Marketing

Diversity Awareness

Entrepreneurship

Executive Communication Skills

Executive Leadership

Finance

Forensic Accounting

Human Resource Management

Project Management

Soft Skills

Strategic Leadership

Training and Development

For additional information call **(972) 279-6511** or visit **www.Amberton.edu**.

ADMISSION INSTRUCTIONS

STEP ONE:

Complete the **APPLICATION FOR ADMISSION** if you:

- A. Are a mature adult with employment experience, and
- B. **Have successfully completed academic work from an accredited college or university,**
AND
- C. **Are in good standing from the last institution attended**
OR
- D. **Are a returning student after three years absence.**

Complete the online application by clicking on the 'Apply button' on the University's website, www.Amberton.edu. A paper admission application can also be faxed, mailed or hand delivered to the University. No admission fee is required. Please note: Due to program delivery methods, not all degree programs are available to International students with F-1 status. Please consult with international student advisors prior to applying for admission. Because the admission application requires a social security number, please do not submit the application by email.

If you are applying for admission to pursue a Master of Arts School Counseling degree, you must also complete the School Counselor Certification Program Application, which is part of the special Admission application. The admission application can be completed online and is available in paper form on the University website, www.Amberton.edu. You must be admitted to the University and be formally accepted into the School Counselor Certification program prior to taking courses applicable to the degree.

International students should review the International Student Admission Requirements before applying for admission. The requirements are located on the University's website, www.Amberton.edu, and in the University's Catalog. If you have any questions, please contact a Student Advisor. **International students must complete a paper admission application.**

Students applying online will receive an email notifying them of their admission status. Within a

week, you will also receive a letter confirming this status along with your student identification number and additional information. Once you are admitted, you may register online for the upcoming session during open enrollment periods. Refer to the Registration Instructions on page 25 for assistance. Also, please email student advisors at Advisor@Amberton.edu, if you need any help with accessing syllabi, selecting courses, or registering for classes.

STEP TWO:

If you have not already done so, order and provide official transcripts from colleges and universities previously attended. Transcript request forms are provided for your convenience online and in the Student Services Offices. You can visit https://amberton.edu/wp-content/uploads/2023/04/Transcript_Other_School.pdf to "Request Transcripts from Other Institutions". As transcripts are received, they will be evaluated. A TCR for each transcript evaluated is accessible through the Student Portal. TCR's are used in the preparation of your degree plan. If you have any questions regarding your TCR, please email Advisor@amberton.edu.

Graduate students who have completed a standard graduate entrance examination (GRE, GMAT, MAT) in the last six years may want to provide an official copy of their scores (not required).



REGISTRATION INSTRUCTIONS

STEP ONE:

Review your degree plan, required courses, and the Schedule of Classes for available courses prior to enrolling. Review the syllabi for selected course(s). They are available on the University's website, www.Amberton.edu, under 'Programs and Courses' and the Course Guide. Search for a specific course (i.e., CSL6800, RGS6035, etc.) and review the session's course syllabus.

STEP TWO:

Registration can be submitted through the University's online registration portal. Online registration is a one-step registration process. Once submitted online, your registration is completed and finalized. **There are no forms to sign and return to the University. If you will be paying in full for your charges and not deferring payment, the full payment is due before June 12, 2025.**

Detailed step-by-step instructions are available on the University's website, www.Amberton.edu, under 'Forms & Publications'. These instructions are available on the University's website, www.Amberton.edu, by clicking on the 'Register Online' button when registration opens and under the 'Forms & Publications' section of the

If you have a restriction on your account that prohibits online registration, please contact a Student Advisor at (972) 279-6511 option # 4 or Advisor@Amberton.edu for the paperwork and steps to complete an alternative enrollment.

website. These instructions provide information on how to access the online registration portal, how to enroll in courses, and FAQs.

Notes:

1. Course load is limited to:
 - a. Undergraduate 12 hours
 - b. Graduate 9 hours
2. If a course has a stated prerequisite in the University's Catalog, you must have completed the prerequisite for a course or be currently enrolled in the prerequisite course before you can register for the course.
3. **Remember to click the 'Submit' button when registering online in order to submit your enrollment for processing. Any pending registration request will be cancelled and removed from the system after 48 hours.**
4. Students registering for online courses follow the same procedures stated above. Access to course information is available on the first day of the session.
5. Students who do not complete the registration process before the first day of the session may enroll during Late Registration Enrollment is limited to available online courses and lecture courses which have not met.



AMBERTON UNIVERSITY

APPLICATION FOR ADMISSION AND RE-ADMISSION

Application is to be completed by all new students and all former Amberton University students who have not been enrolled for three (3) or more years. In accordance with the American With Disabilities Act (ADA), please complete the reverse side.*

Please note: Due to program delivery methods, not all degree programs are available to International students with F-1 status. Please consult with international student advisors prior to applying for admission for degree advising.

ENTRY DATE: ___ Fall ___ Winter ___ Spring ___ Summer YEAR _____

PERSONAL DATA: Social Security Number _____ - _____ - _____

First Name: _____ **Last:** _____

Address: _____

City/State/Zip: _____

Phone: Daytime: _____ **Cell:** _____

Text?: ___ Yes ___ No (school closings/important information)

E-mail Address: _____

Date of Birth: _____ (MM/DD/YY)

Years of Employment: _____ **Employer:** _____

U.S. Citizen/Permanent Resident:

___ Yes

___ No, identify Country of Origin: _____

Immigration Status: _____

Ethnicity: Hispanic/Latino ___ Yes ___ No

Race: ___ White (1) ___ Amer Indian/Alaska Native (2)

___ Black or African Amer (3) ___ Asian (4)

___ Hawaiian/Pacific Islander(7) ___ Unknown (6)

Sex: ___ Male ___ Female

EDUCATIONAL DATA:

Classification: Applying for ___ Undergraduate ___ Graduate level at AU.

Degree Code _____ (Degree codes have been updated. Please refer to codes on page 27)

Non-Degree Seeking _____

List in chronological order, all colleges and universities attended:

Name	City/State	Dates	Hrs Completed	Degree(s)
		Attended	(No Degree)	Awarded

COMPLETE THE INFORMATION ON THE NEXT PAGE

If you are on academic or disciplinary probation or suspension from the last college attended, please explain in space below.

Have you ever been enrolled at Amberton University before?

_____ No _____ Yes (Date last enrolled: _____)

Identify any names different from the name on the front of the application that might be on transcripts you have sent to Amberton University:

I certify that the information I have provided is correct. If my application is accepted, I agree to abide by the policies, rules, regulations, and ethical standards of the University. I further understand that the willful submission of false information is grounds for rejection of my application, withdrawal of any offer of acceptance, cancellation of enrollment, and/or disciplinary action. In addition, I authorize University officials to verify any information relevant to my acceptance and/or continued enrollment with the University, including but not limited to the right to request the verification of degrees and/or courses completed at transferring institutions.

Signature **Date**

***American With Disabilities Act (ADA)**

Please attach a description of the nature of your disability and the special accommodation desired.

VIRTUAL BOOKSTORE

TEXTBOOKS AVAILABLE

**Visit Amberton.ecampus.com to access the
Amberton University virtual bookstore.**

- Order textbooks online 24/7.
- All of your books available in one place.
- Have your books delivered directly to your door.
- Cash back for selling textbooks



Questions? Contact the Virtual Bookstore Program Customer Service Team at 1-877-284-6744 or bookstore@ecampus.com

Powered by
ecampus.com

UNDERGRADUATE & GRADUATE DEGREE PROGRAM CODES

UNDERGRADUATE

BA Professional Development (70)

BBA Accounting

Public Accounting Track (71)

Management Accounting Track (72)

BBA/MBA Dual Degree Program Accounting (73)

BBA Entrepreneurship (74)

BBA General Business (75)

BBA Management (76)

BBA Project Management (77)

BS Applied Studies (78)

BS Human Relations and Business (79)

Undecided (19)

GRADUATE

MA Marriage and Family Therapy (48)

MA Clinical Mental Health Counseling (53)

MA Professional Development (17)

MA School Counseling (61)

MBA Accounting (57)

MBA Entrepreneurship (65)

MBA General Business (42)

MBA Management (43)

MBA Project Management (39)

MBA Strategic Leadership (44)

MS Agile Project Management (49)

MS Data Analytics (59)

MS Family Studies (45)

MS Family Studies with a Specialization in Christian Counseling (55)

MS Human Relations and Business (11)

MS Human Resource Management (50)

MS Human Resource Training and Development (46)

MS Managerial Science (47)

Undecided (19)

ADDITIONAL DEGREE CHOICES FOR FORMER AMBERTON STUDENTS ONLY

A student who selects one of the following “discontinued/replaced” degrees must (1) have been in attendance and enrolled for the degree prior to the Summer 2024 session and, (2) must complete all degree requirements by the dates specified below for each degree. These degree options will be discontinued and unavailable after the dates below. If all degree requirements cannot be completed by the given date, the student must select a degree from the list on the previous page.

UNDERGRADUATE

BA Professional Development (14)	(program to be completed by May 31, 2026)
BBA Accounting	(program to be completed by May 31, 2026)
Public Accounting Track (66)	(program to be completed by May 31, 2026)
Management Accounting Track (68)	(program to be completed by May 31, 2026)
BBA/MBA Dual Degree Program Accounting (67)	(program to be completed by May 31, 2026)
BBA Entrepreneurship (64)	(program to be completed by May 31, 2026)
BBA General Business (31)	(program to be completed by May 31, 2026)
BBA Management (32)	(program to be completed by May 31, 2026)
BBA Project Management (36)	(program to be completed by May 31, 2026)
BS Applied Studies (34)	(program to be completed by May 31, 2026)
BS Human Relations and Business (35)	(program to be completed by May 31, 2026)

GRADUATE

MS Enterprise Analytics (58)	(program to be completed by May 31, 2026)
------------------------------	---



AMBERTON UNIVERSITY

REQUEST FOR A CHANGE OF SCHEDULE

INDICATE SESSION FOR WHICH CHANGE IS BEING MADE:

____ SPRING ____ SUMMER ____ FALL ____ WINTER ____ YEAR

STUDENT ID (AU ID or SSN): _____

Name: _____

Phone number where you may be reached during the day: _____

Please check if you are receiving:

VA BENEFITS: _____ FINANCIAL AID: _____

I request to DROP the following course(s): Dept./Course #/Section #/Course Name.

There is a \$10 fee for each course dropped. This charge will be added to your account.

1. _____

2. _____

Are you withdrawing from all the courses in which you are enrolled? _____ Yes _____ No

I request to ADD the following course(s): Dept./Course #/Section #/Course Name.

1. _____

2. _____

I accept the academic and financial responsibility for the requested change(s). I understand I will receive a confirmation of these changes after they have been processed.

Student's Signature: _____ Date: _____

DELIVER, MAIL, OR FAX THIS FORM TO THE UNIVERSITY.

Mailing Address:

Amberton University

13601 LBJ FWY

Garland, TX 75041-4707

FAX Number:

(972) 279-9773

Email Address:

Advisor@Amberton.edu

IF YOU ARE RECEIVING A REFUND, FILL OUT THE FOLLOWING INFORMATION:

____ PLEASE CREDIT MY CREDIT CARD ACCOUNT

____ PLEASE HOLD THE CHECK, I WILL PICK IT UP

____ PLEASE MAIL THE CHECK TO:

ADDRESS: _____

CITY/ST/ZIP: _____

AMBERTON UNIVERSITY CREDIT CARD PAYMENT OPTION



Students may pay their educational charges with cash, check, or credit card (VISA, MasterCard, Discover Card, and American Express only). To make payment by credit card, complete this form giving ALL requested information. Return the form by email to busoffice@amberton.edu, fax (972/279-9773), mail, or in person to the University.

In order to pay obligations to Amberton University, I hereby authorize my credit card to be charged with the amount indicated below. Your card will be declined if your limit, credit or daily, is exceeded. I understand if my card is declined, I will be charged a handling fee of \$25.00. If I do not make the payment good within 10 days, I understand my entire balance becomes due and I am subject to suspension from the University.

Student's Name: _____

Student's ID (SSN or AU ID): _____

Amount Authorized for Charge: \$ _____

Credit Card:

Number: _____ - _____ - _____

Expiration Date: _____ / _____
Month Year

Cardholder's Printed Name: _____

Cardholder's Signature: X _____

Cardholder's Billing:

Address: _____

City/State: _____ **Zip:** _____

Daytime Phone Number: (_____) _____ - _____